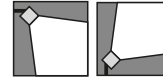


220-240V  
50/60 HzIK  
09IP  
65

Modern floodlight for LED light source.

**TECHNICAL DATA****Mounting:** on the adjustable holder, on the substrate**Body:** high pressure die-cast aluminum**Lateral Surface Wind Exposed:** 0.163 m<sup>2</sup>**Colour:** gray**Diffuser:** tempered glass**ELECTRICAL DATA****Power supply efficiency:** >92%**Power:** 220-240V 50/60Hz**Includes light source:** yes**Type of equipment:** STANDARD, EASY CONNECT**Electrical connection:** max 3x2,5 mm<sup>2</sup> wire**OPTICAL DATA****Light distribution:** circular, asymmetric-narrow, asymmetric-wide**Way of lighting:** direct**Type of optic:** lens**GENERAL DATA****Lifetime (L80B10):** 100 000 h**Available on request:** LLOC, DALI, DIM 1..10V**Warranty:** 5 years**Application:** industrial facilities, warehouses, metro, parking areas, facades

Code	Luminaire power [W]	Lumen luminaire [lm]	Efficacy [lm/W]	Colour temperature [K]	CRI/Ra	Operating temperature range [°C]
<b>Beam angle: 25°</b>						
120202.5L011.1X	155	20250	131	4000	>70	-40 ... +35
120202.5L021.1X	155	20250	131	5700	>70	-40 ... +35
120202.5L031.1X	155	20250	131	6500	>70	-40 ... +35
<b>Beam angle: 50°</b>						
120202.5L011.2X	155	19700	127	4000	>70	-40 ... +35
120202.5L021.2X	155	19700	127	5700	>70	-40 ... +35
120202.5L031.2X	155	19700	127	6500	>70	-40 ... +35
<b>Beam angle: asymmetric-narrow</b>						
120202.5L011.3X	155	19350	125	4000	>70	-40 ... +35
120202.5L021.3X	155	19350	125	5700	>70	-40 ... +35
120202.5L031.3X	155	19350	125	6500	>70	-40 ... +35
<b>Beam angle: asymmetric-wide</b>						
120202.5L011.4X	155	19100	123	4000	>70	-40 ... +35
120202.5L021.4X	155	19100	123	5700	>70	-40 ... +35
120202.5L031.4X	155	19100	123	6500	>70	-40 ... +35

120202.5L011.1



Type of equipment

1 STANDARD

2 EASY CONNECT

Luminous flux tolerance +/- 10%.

Power tolerance +/- 5%.

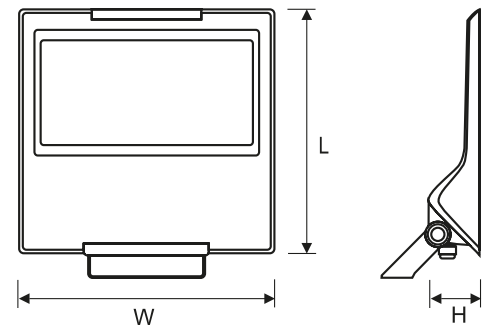
Lighting beam, light intensity distribution and light efficiency were examined in accordance with the EN ISO 17025:2005 norm for EN13032 norm series and the LM-79 norm.

Up-to-date product info and General Warranty Terms available on our website [www.luglightfactory.com](http://www.luglightfactory.com)

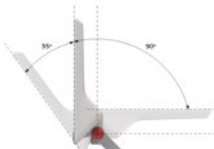
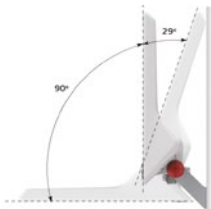
Detailed information on luminous fluxes and powers for individual indexes are indicated on the product data sheet.

The parameters in the data sheet are given for Ta=25°C.

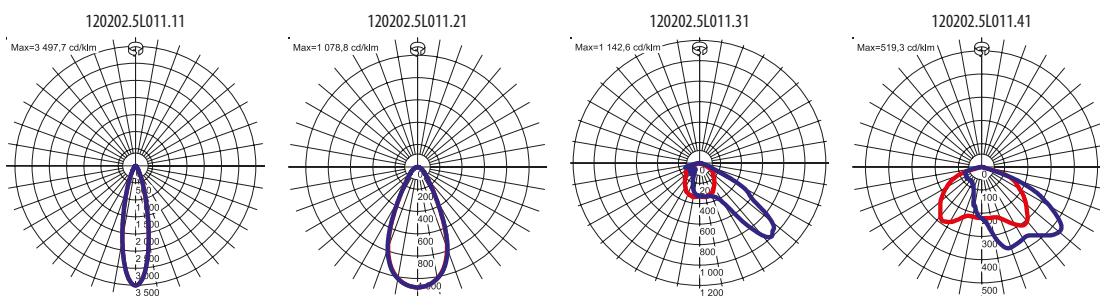
Code	Dimensions [mm] L W H	Pallet quantity	Quantity in package	Net weight [kg]
<b>Beam angle: 25°</b>				
120202.5L011.1X	403 405 95	24	3	8.8
120202.5L021.1X	403 405 95	24	3	8.8
120202.5L031.1X	403 405 95	24	3	8.8
<b>Beam angle: 50°</b>				
120202.5L011.2X	403 405 95	24	3	8.8
120202.5L021.2X	403 405 95	24	3	8.8
120202.5L031.2X	403 405 95	24	3	8.8
<b>Beam angle: asymmetric-narrow</b>				
120202.5L011.3X	403 405 95	24	3	8.8
120202.5L021.3X	403 405 95	24	3	8.8
120202.5L031.3X	403 405 95	24	3	8.8
<b>Beam angle: asymmetric-wide</b>				
120202.5L011.4X	403 405 95	24	3	8.8
120202.5L021.4X	403 405 95	24	3	8.8
120202.5L031.4X	403 405 95	24	3	8.8



## OTHER PICTURES



## LIGHT BEAM CURVES



Luminous flux tolerance +/- 10%.

Power tolerance +/- 5%.

Lighting beam, light intensity distribution and light efficiency were examined in accordance with the EN ISO 17025:2005 norm for EN13032 norm series and the LM-79 norm.

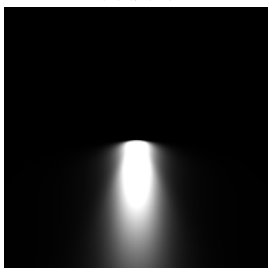
Up-to-date product info and General Warranty Terms available on our website [www.luglightfactory.com](http://www.luglightfactory.com)

Detailed information on luminous fluxes and powers for individual indexes are indicated on the product data sheet.

The parameters in the data sheet are given for Ta=25°C.

**WAY OF LIGHTING**

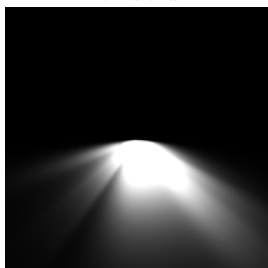
120202.5L011.11



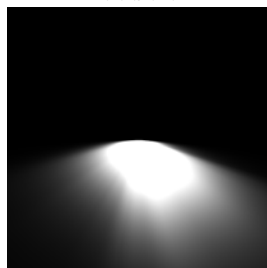
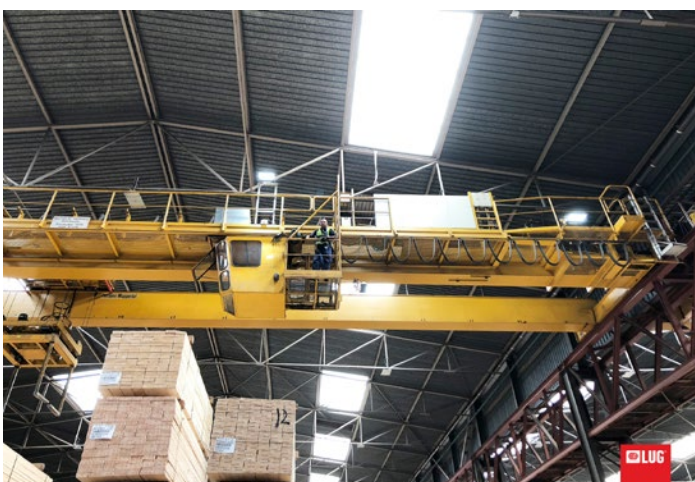
120202.5L011.21



120202.5L011.31



120202.5L011.41

**OTHER PROJECTS**

Houtgroep van Drimmelen te Zwijndrecht, The Netherlands



Qubus Hotel, Gorzów Wlkp., Poland

Luminous flux tolerance +/- 10%.

Power tolerance +/- 5%.

Lighting beam, light intensity distribution and light efficiency were examined in accordance with the EN ISO 17025:2005 norm for EN13032 norm series and the LM-79 norm.

Up-to-date product info and General Warranty Terms available on our website [www.luglightfactory.com](http://www.luglightfactory.com)

Detailed information on luminous fluxes and powers for individual indexes are indicated on the product data sheet.

The parameters in the data sheet are given for Ta=25°C.